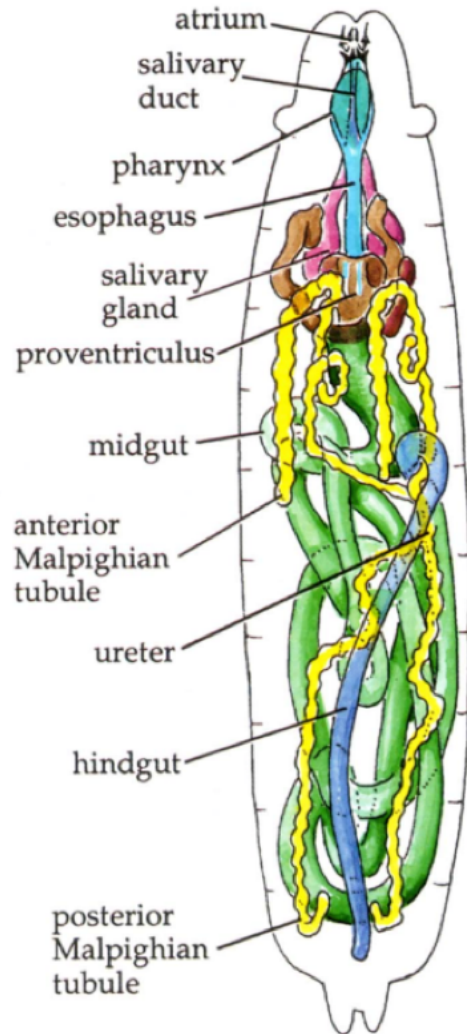


# SCoPE – Identification Key



## Larvae digestive system overview



The **mouth** parts grab food which enters the atrium (mouth).

The **salivary duct** passes digestive enzymes and juices from the salivary gland.

The **salivary glands** are particularly large in the larva as its main activity is to eat, digest food and store the energy in the form of fat.

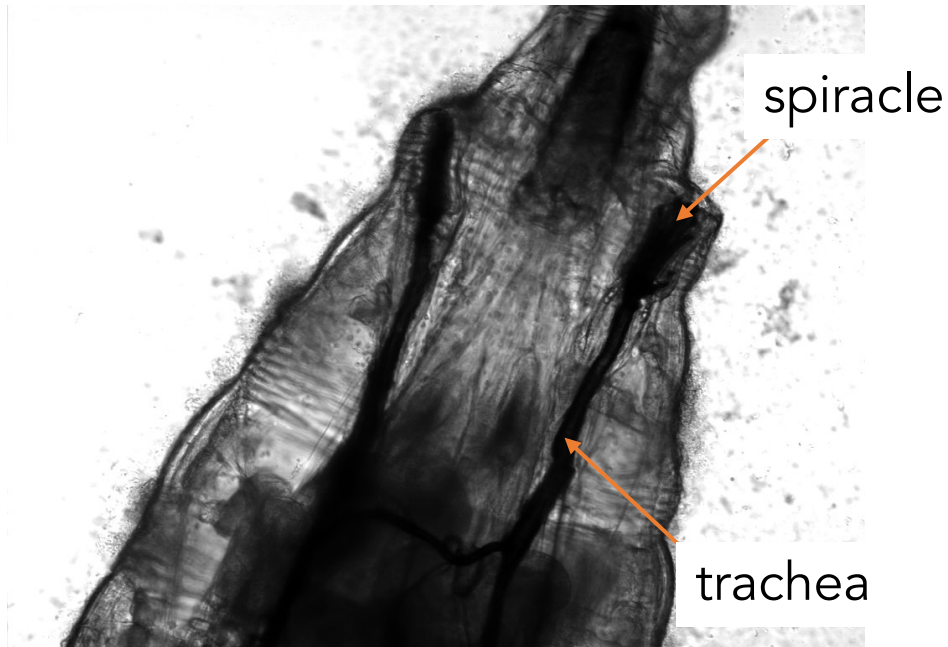
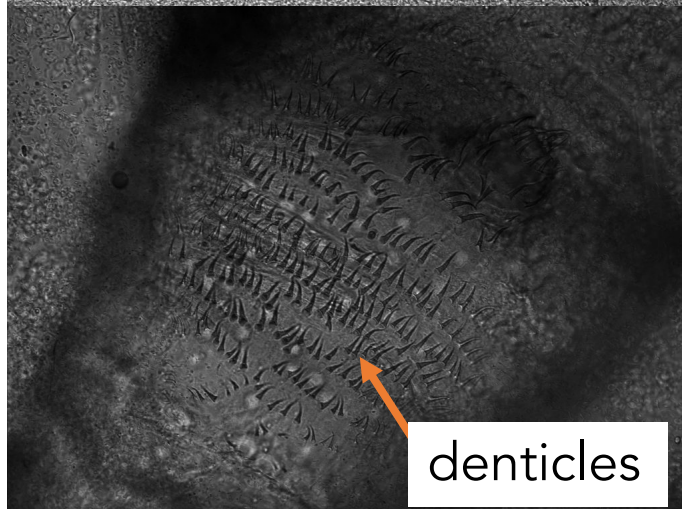
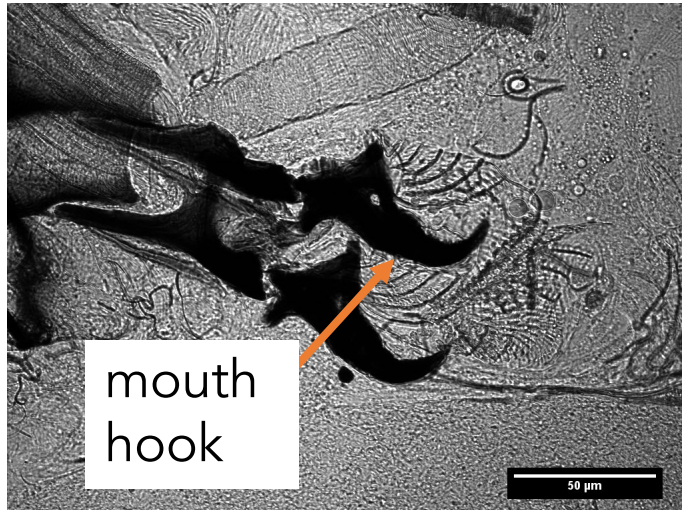
The **intestine** runs throughout the length of the body. Food passes from the atrium, through the **esophagus** (turquoise), **midgut** (green) and **hindgut** (blue) before being expelled.

**Malpighian tubules** serve a similar function to kidneys in taking away waste products of metabolism.

# SCoPE – Identification Key



Before dissection, look at the cuticles and head part to see if you can spot these features:



Oxygen is delivered to the tissues by **trachea** which go from the **spiracles** (holes on the external surface near the mouth) and branch into smaller and smaller tubes to reach into all parts of the body.



# SCoPE – Identification Key



After dissection, you may be able to see...

